

CAUTION: READ USER GUIDE BEFORE USE. USER GUIDE BEFORE USE. USER GUIDE BEFORE USE.

# DRV81315-Q1 EVM MD127E2

MSPM0

DRV81315-Q1

### LED STATUS

3V3_STATUS	D1	R12
*MCU_STATUS	D2	R13
*STATUS_U8	D3	R14
*STATUS_U9	D4	R15
*STATUS_U10	D5	R16

GND SH1

### BUCK 3V3 SUPPLY

### CSA 1

U5 R27 R28 R29 R30 R36 C24 C27 C28 R23

DRV81315ADDA

### CSA 2

R26 R27 R28 R29 R30 R31 R32 R24 C25 C28 U6

DRV81315DDA

### CSA 3

C26 U7 C29 R33 R34 R35 R25

DRV81315ADRL

### 10-PIN ARM CONNECTOR

U1 J1 J2 TP1 TP2 TP3 TP4 TP5 TP6 TP7 R1 R2 R3 R4 R5 C1 C2 C3 C4

### AUXILIARY MCU PINS

PA24 PA17 PA11 PA1 J3

### DEVICE ID

DEV\_ID1 R9 R6 DEV\_ID2 R10 R7 DEV\_ID3 R11 R8

6V TO 18V



VM

GND

GND SH2

OUT\_U8

OUT\_U8

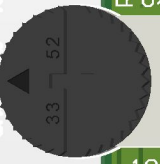
OUT\_U9

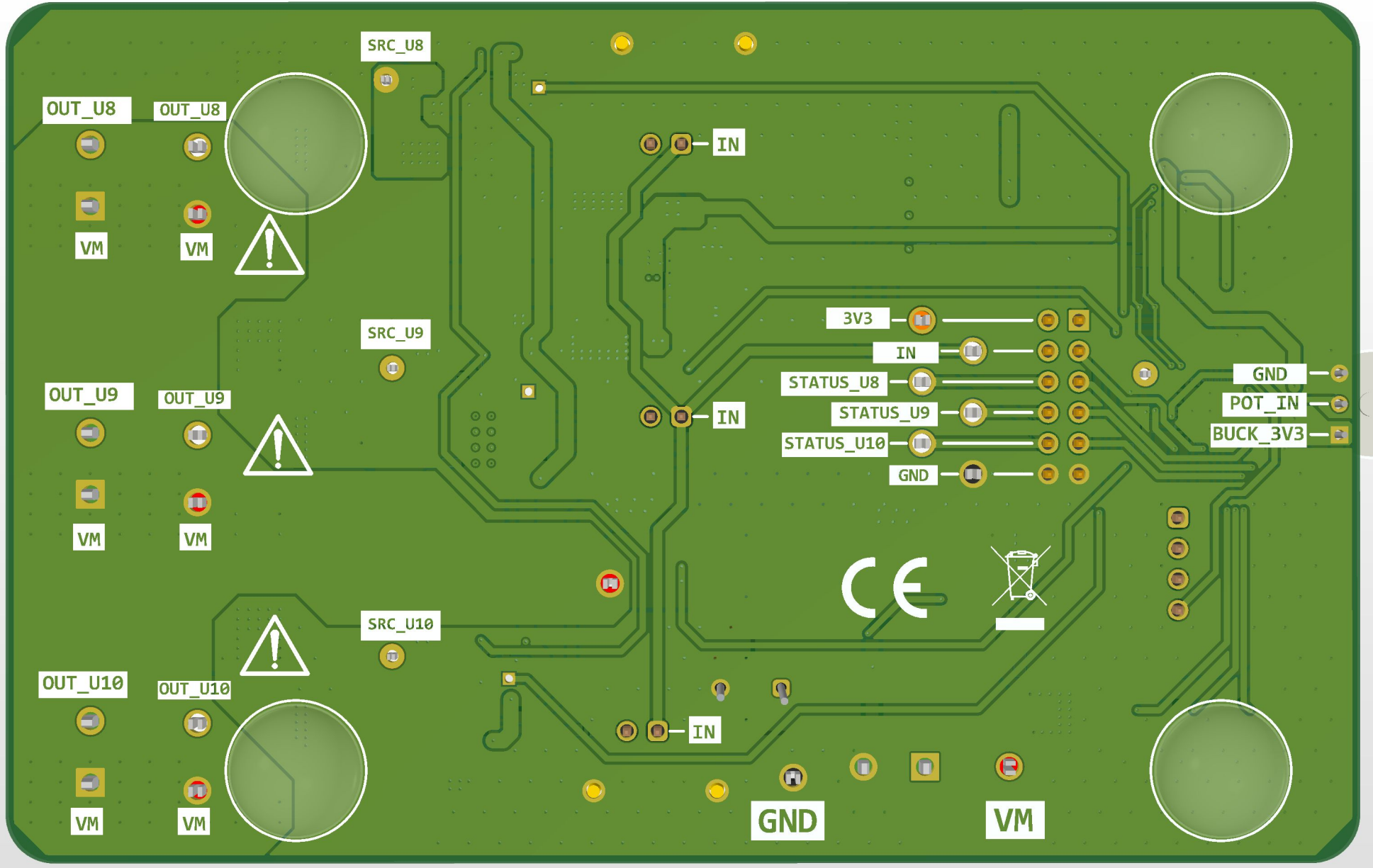
OUT\_U9

OUT\_U10

OUT\_U10

For evaluation only; not FCC approved for resale.





CAUTION! BEV0 needs environmental testing needs environmental testing needs environmental testing